



COMPASS MOD. 150 D - E - F



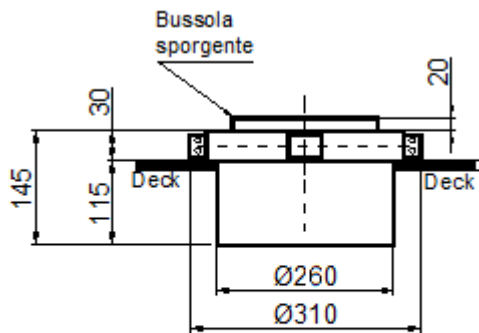
Compass with drum
Mod. **150/D**
For desktop or encasing, light 12 e
24 V. Compensation B C D.



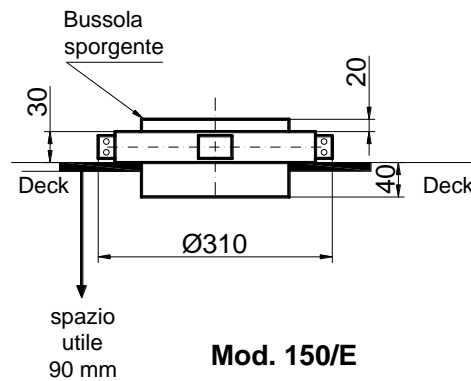
Compass with gimbals Mod. **150/E**
For encasing, light 12 e 24 V.,
Compensation B C D.
Encasing hole diam. 282 mm



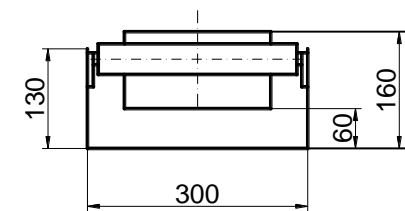
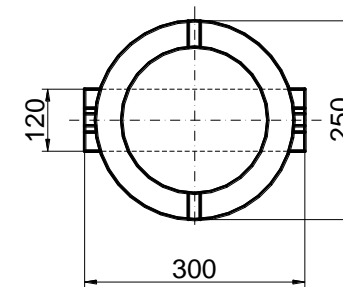
Compass with bracket Mod. **150/F**
For desktop, light 12 e 24 V., Compensation B
C D.



Mod. 150/D



Mod. 150/E



Mod. 150/F